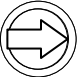
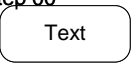












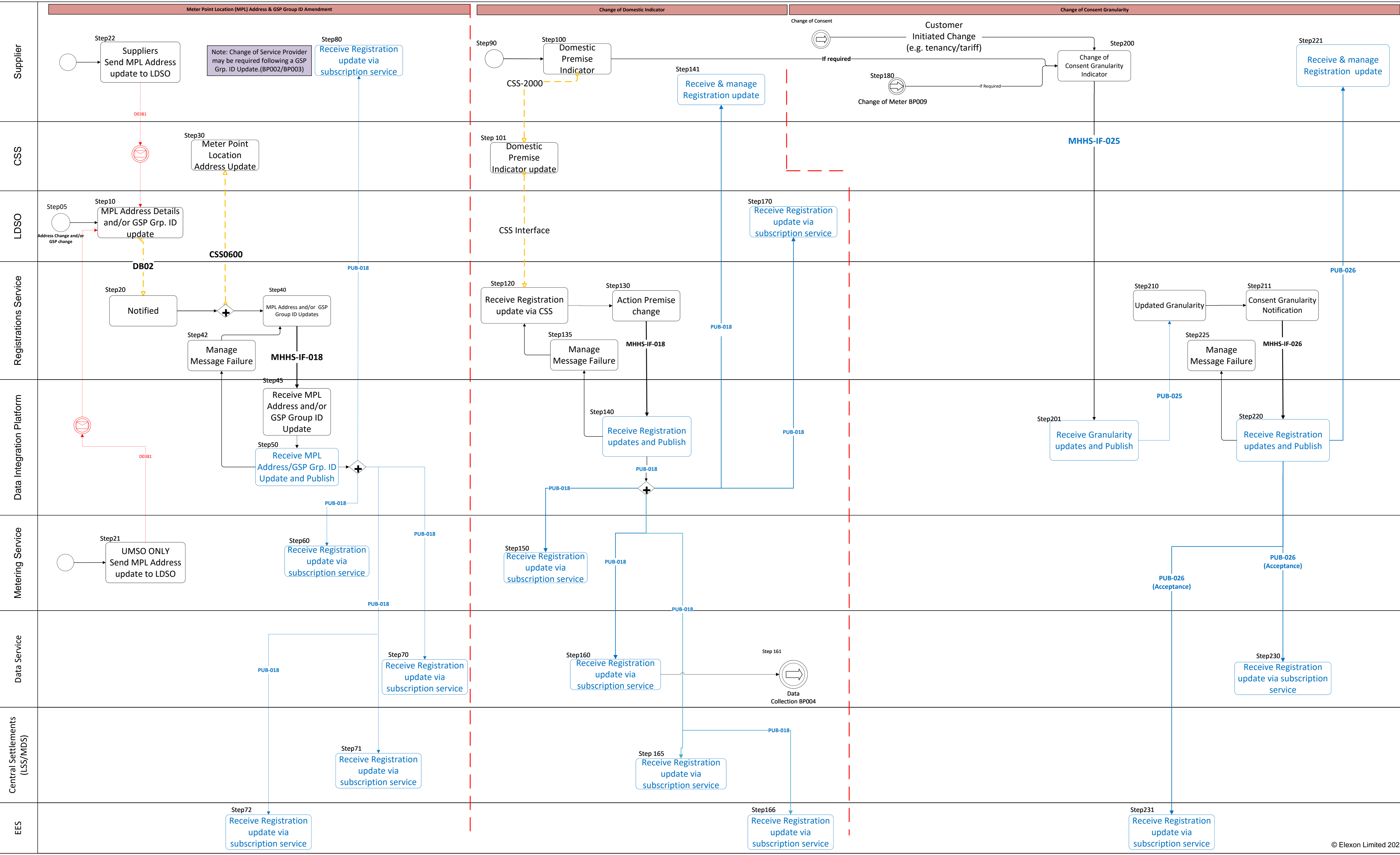
<b>Version</b>	<b>Description</b>	<b>Author</b>	<b>Date</b>
0.01	First draft based on AWG Consultation Documentation	MHHS Programme	23/09/2021
0.02	Updates following Design Team Reviews	MHHS Programme	05/11/2021
0.03	Updates following BPRWG	MHHS Programme	24/11/2021
0.05	Updates following comments from BPRWG and Advanced & UMS WG	MHHS Programme	09/02/2022
0.06	Updated with new interface numbers	MHHS Programme	18/02/2022
1.0	Issued for BPRWG wider Review	MHHS Design Team	21/02/22
1.10	Issued for BPRWG wider Review	MHHS Design Team	25/03/22
2.00	Issued to DAG for Review	MHHS Design Team	25/04/22
3.00	Issued For Change Control	MHHS Design Team	26/07/22
3.5	Issued For Industry Review	MHHS Design Team	14/10/22
4.0	Baselined DAG Approval	MHHS Design Team	31/10/22
4.5	issued for M5 Work Off Plan assurance review	MHHS Design Team	16/12/22
4.6	issued for M5 Work Off Plan approval	MHHS Design Team	20/01/23
4.7	Updated with BPRWG feedback	MHHS Design Team	31/01/23
5.0	DAG Baseline	MHHS Design Team	16/02/23
5.1	MHHS-DIN-62, MHHS-DIN-103, MHHS-DIN-122, MHHS-DIN-151	MHHS Design Team	11/04/23
5.2	MHHS-DIN-465	MHHS Design Team	28/07/23
5.3	MHHS-DIN-390	MHHS Design Team	08/08/23



Item	Description
	Process
Step.00 	Task
	Decision gateway
	Initiate multiple steps
	Collapsed sub-process
	Message
	Start BPM
	End BPM
	Sequence flow – Black = Process Step / Blue = DIP Output
	Message flow - Orange = 3 <sup>rd</sup> Party / Red = TBD

MHSP-BP-010A – Change of Registration Data – v5.1

<p><b>Business Process Description</b> This BPMN diagram describes the 'Registration Service Data Updates' Business Process. For a detailed description of each step in the BPM, please refer to the accompanying Business Process Descriptions [BPD] document for this Business Process.</p>	<p><b>Actors</b> Supplier CSS LDSO Registration Service Data Integration Platform Data Service (SDS, ADS, UMSDS) Metering Service (MSS, MSA, UMSO) Central Settlements (LSS/MDS) EES</p>	<p><b>MHHS Interfaces</b> MHHS-IF-018-Notification of Registration Data Item Changes  MHHS-IF-025-Supplier Updates to Registration  MHHS-IF-026-Registration Service Notification of Supplier Data Changes</p>	<p><b>Publication List</b> PUB-018 - Notification of Registration Data Item Changes  PUB-025- Supplier Updates to Registration  PUB-026-Registration Service Successful Notification of Supplier Data Changes</p>	<p><b>BPM included as part of the process</b> MHHS-BP009 - Change of Meter</p>	<p><b>BPM entry</b> N/A</p>	<p><b>Exit BPM</b> MHHS-BP004 – Data Collection</p>
---	--	--	---	--	---------------------------------	---



**Business Process Description**  
 This BPMN diagram describes the 'Registration Service Data Updates' Business Process. For a detailed description of each step in the BPM, please refer to the accompanying Business Process Descriptions [BPD] document for this Business Process.

**Actors**  
 Supplier  
 LDSO  
 Registration Service  
 Data Integration Platform  
 Data Service (SDS, ADS, UMSDS)  
 Metering Service (MSS, MSA, UMSO)  
 Central Settlements (LSS, MDS)  
 EES

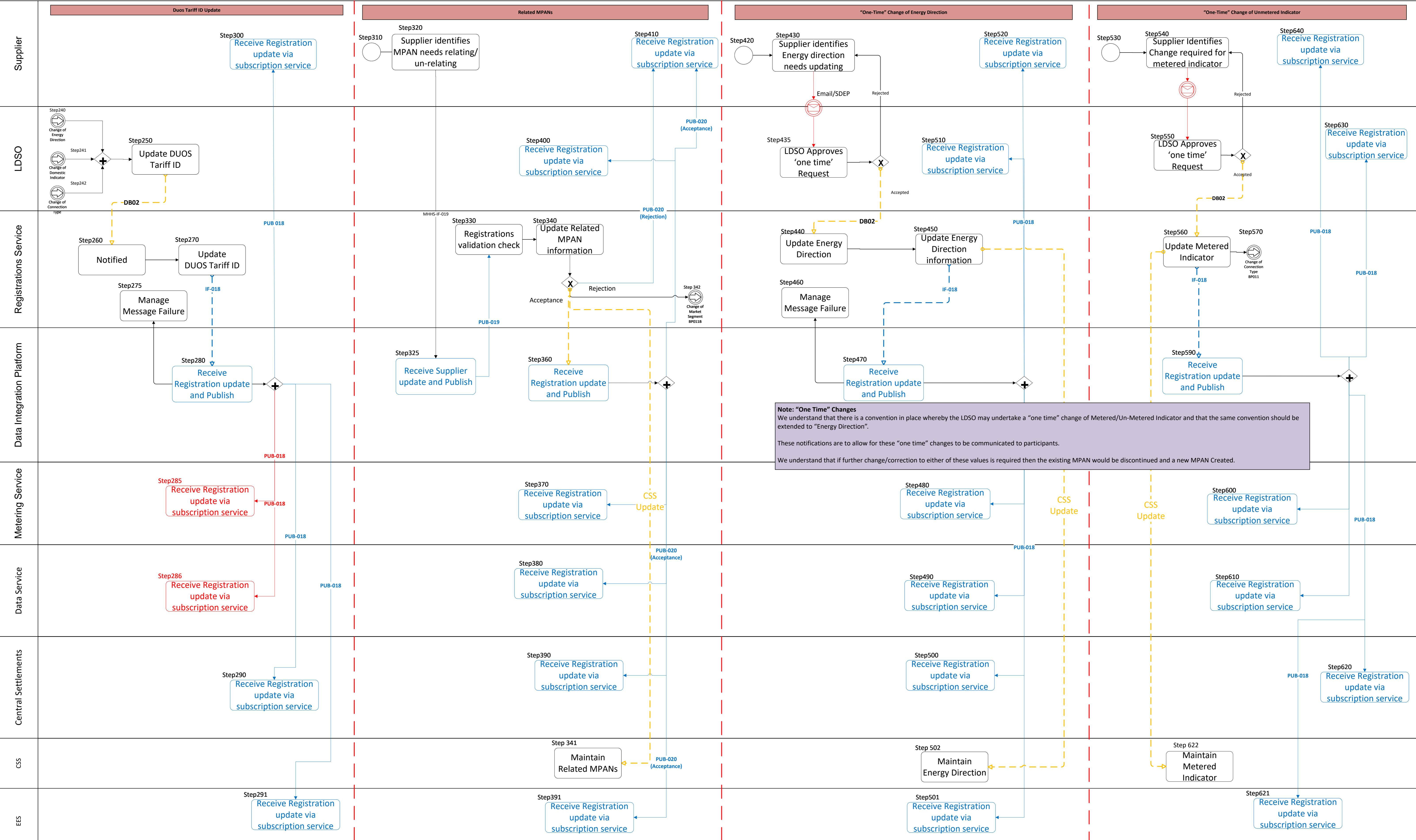
**MHHS Interfaces**  
 MHHS-IF-018-Notification of Registration Data Item Changes  
 MHHS-IF-019 – Maintain Mpan Relationships  
 MHHS-IF-020 – Maintain Mpan Relationships outcome

**Publication List**  
 PUB-018 - Notification of Registration Data Item Changes  
 PUB-019 – Maintain Mpan Relationships  
 PUB-020 – Maintain Mpan Relationships outcome

**BPM included as part of the process**  
 MHHS-BP011 – Change of ConType and/or Mkt Segment

**BPM entry**  
 N/A

**Exit BPM**  
 N/A



**Business Process Description**

This BPMN diagram describes the 'Registration Service Data Updates' Business Process. For a detailed description of each step in the BPM, please refer to the accompanying Business Process Descriptions [BPD] document for this Business Process.

**Actors**

- Supplier
- CSS
- LDSO
- Registration Service
- Data Integration Platform
- Data Service (SDS, ADS, UMSDS)
- Metering Service (MSS,MSA, UMSO)
- Central Settlements (LSS/MDS)
- EES

**MHHS Interfaces**

- MHHS-IF-018-Notification of Registration Data Item Changes
- MHHS-IF-025-Supplier Updates to Registration
- MHHS-IF-026-Registration Service Notification of Supplier Data Changes
- MHHS-IF-019 - Maintain Mpan Relationships
- MHHS-IF-020 - Maintain Mpan Relationships outcome

**Publication List**

- PUB-019 - Notification of Registration Data Item Changes
- PUB-025- Supplier Updates to Registration
- PUB-026-Registration Service Successful Notification of Supplier Data Changes
- PUB-019 - Maintain Mpan Relationships
- PUB-020 - Maintain Mpan Relationships outcome

**BPM included as part of the process**

N/A

**BPM entry**

N/A

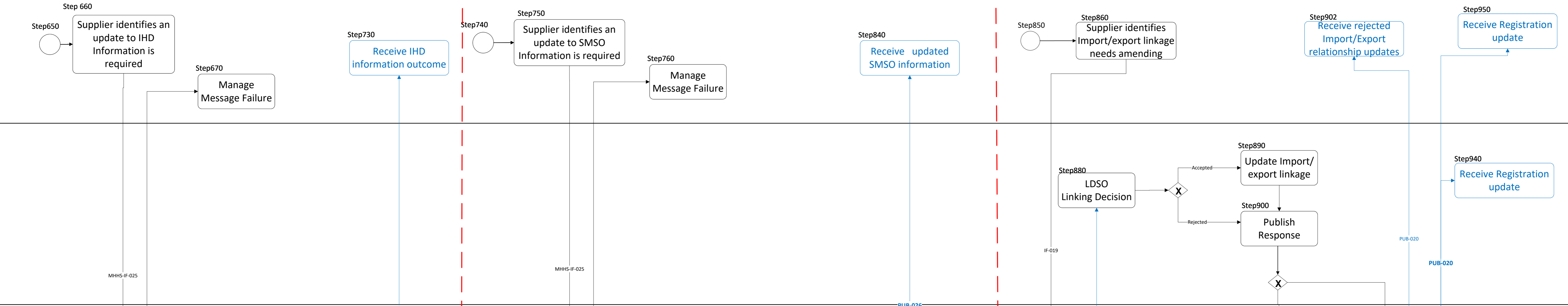
**Exit BPM**

N/A

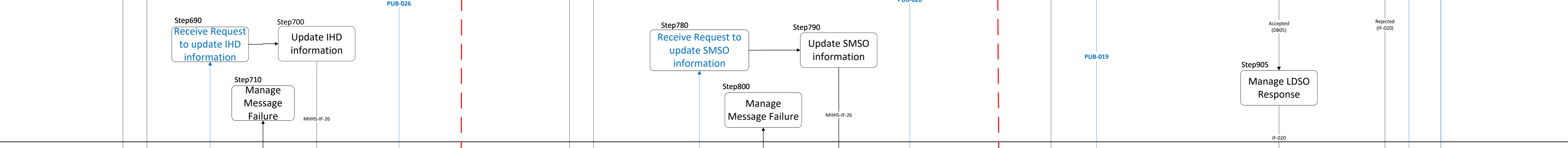
Supplier



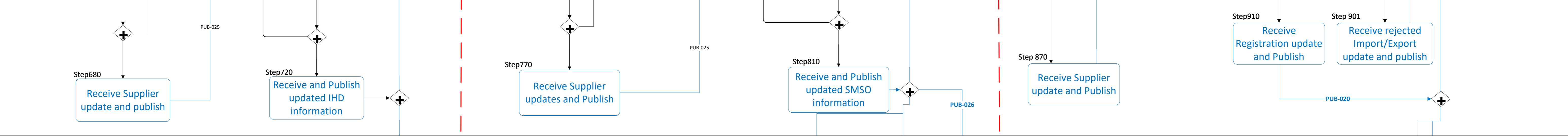
LDSO



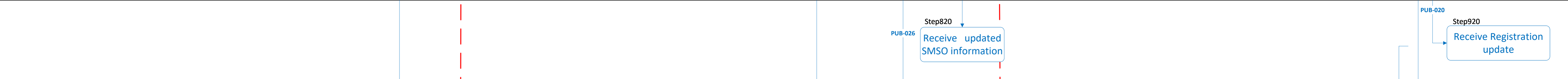
Registrations Service



Data Integration Platform



Metering Service



Data Service



EES

